

Scirocco Exchange

Capacity-building for integrated care



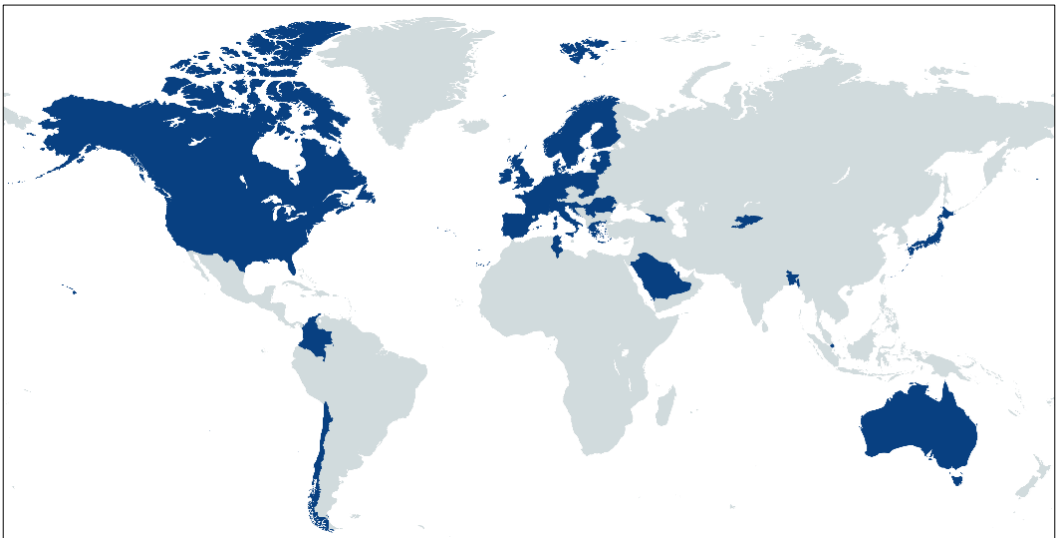
Achievements of SCIROCCO Exchange

Capacity-building is both the foundation and aspiration of SCIROCCO Exchange, an EU Health Programme funded project. The project aims to facilitate access to tailored, evidence-based support and improvement planning by recognising different starting points, or levels of maturity, of healthcare systems in Europe that have a focus on integrated care.

Knowledge transfer has been widely recognised as an effective enabler to access existing evidence and learning on integrated care and to facilitate further improvement. Effective knowledge management and improvement planning requires **dedicated support and understanding of the local context and maturity of the particular healthcare system** that is seeking the support. That is why a key aspect of the SCIROCCO Exchange **Knowledge Management Hub** is support of context, local maturity, adaptation and tailored, personalised capacity-building.

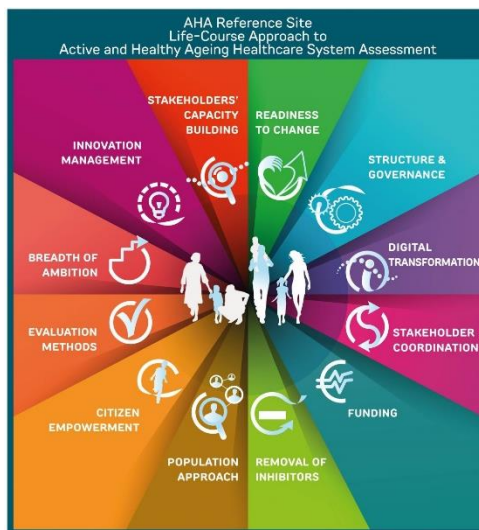
The Hub is currently available in **11 languages**. It has been **used in nearly 100 organisations, regions, and countries in Europe and beyond, reaching the community of over 700 unique users**.

Countries / Regions shown in blue using the Hub



The Hub was also successfully adapted to assess the maturity of:

- Demand-driven innovation
- Digital Neighbourhood
- Life course approach to active and healthy ageing



How to use SCIROCCO Exchange Knowledge Management Hub?

The SCIROCCO Exchange Knowledge Management Hub **is a community-driven online platform which helps regions, countries and organisations to:**

- Better understand the **local readiness, needs and priorities** for the adoption of integrated care informed by multi-stakeholders' dialogues and consensus-building.
- 40 regions and countries assessed their local readiness for integrated care
- 738 unique users of SCIROCCO Exchange online self-assessment tool
- 1535 unique assessments



“The self-assessment has enabled us to reflect on the situation in which we find ourselves regarding the implementation of integrated care in the Basque Country. There's still work to be done, but we're on the right track” - Osakidetza

- Access **readily available evidence, knowledge and expertise** on integrated care to maximise the impact of existing resources and encourage their transferability and adaptation to local context.
- 1654 assets mapped and consulted
- 654 assets linked to Knowledge Management Hub

SCIROCCO Exchange Knowledge Management Hub

HOME

INTEGRATED CARE ASSESSMENTS

OTHER ASSESSMENTS

ASSETS

COMMUNITIES

LOGOUT

Assets

SEARCH ASSETS

MANAGE ASSETS

Quick search

Create asset

Advanced search for my assessments ▾

My assets

Advanced search for other assessments ▾

My asset collections

Advanced general search

➤ Co-design **personalised knowledge transfer support** for those searching for the foundations of transition and or improvement of the existing system design for integrated care.

- 9 personalised knowledge transfer programmes implemented
- 26 successfully implemented knowledge transfer activities

Scirocco Exchange Knowledge Transfer programme

Expert mission
to receiving
region

Events in
receiving
region, or in
other relevant
place

Capacity-
building
activities in
receiving region
or elsewhere if
relevant

Study visit to
transferring
entity/ region

Exchange,
secondment or
placement of
staff

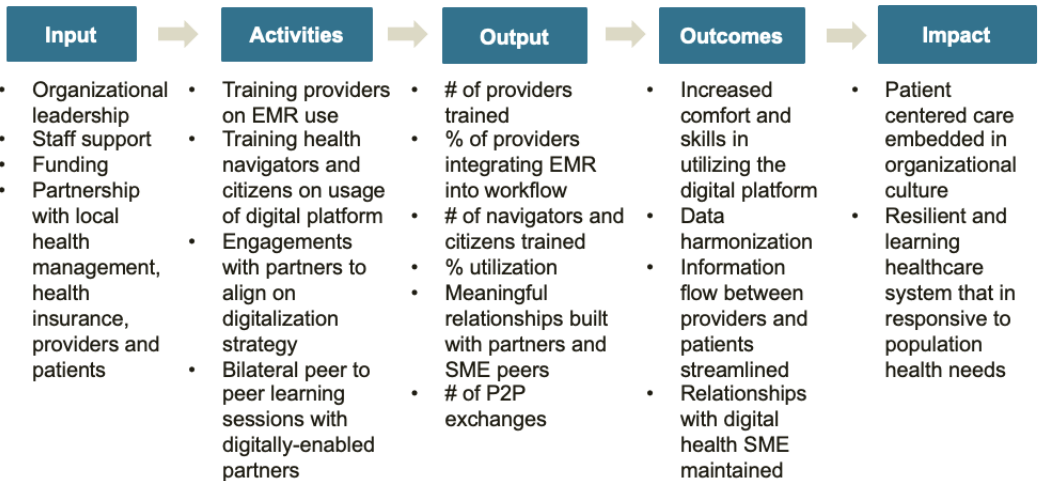
“The KT process was assessed as timely, the activities take place at the right time and it was well targeted, it was inspiring and exploratory” - **Poland**

➤ Co-design **improvement planning** that is tailored to the local context, maturity and aspirations of European countries, regions and organisations.

- 9 co-designed improvement programmes

Logic Model Example – WMK (Germany)

Focus Area: Digital Infrastructure



“...the logic models brings **structured and clear plan** how to improve regional integrated care work. ... The intended results section serves both as **measurable** factor of integrated care improvement and also as motivation to front line workers who seek to reach the defined goal” - Lithuania

Facts about SCIROCCO Exchange

SCIROCCO Exchange is a 41-month project, running from January 2019 to May 2022. The project's total budget is €2,649,587. The project consortium consists of 14 partners from 10 countries, including national and regional healthcare authorities, universities, competence centres and membership organisations. Capacity-building support will be provided to 9 national and regional healthcare authorities, with diverse maturity and organisation of integrated care.

SCIROCCO Exchange Consortium

National and Regional Health and Social Care Authorities

Belgium - Flanders Agency for Health and Care

Germany - Optimedis

Italy - Regional Agency of Health and Social Care of Puglia

Lithuania - Vilnius University Hospital Santaros Klinikos

Poland - National Health Fund

Scotland - Scottish Government (Project Co-ordinator)

Slovakia - Pavol Jozef Safarik University

Slovenia - Institute of Social Protection of the Republic of Slovenia

Spain - Basque Health Service - Osakidetza

Universities and Competence Centres

Scotland - University of Edinburgh

Spain - Kronikgune - Institute for Health Services Research

Spain - University of Valencia

Membership Organisations

Belgium - European Health Telematics Association

France - Assembly of European Regions

This leaflet is designed as part of the SCIROCCO Exchange project (826676) which has received funding from the European Union's Health Programme (2014-2020)

The content of this leaflet represents the views of the author only and is his/her sole responsibility; it cannot be considered to reflect the views of the European Commission and/or European Health and Digital Executive Agency (HaDEA) or any other body of the European Union. The European Commission and the Agency do not accept any responsibility for use that may be made of the information it contains.



Co-funded by
the Health Programme
of the European Union